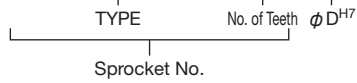


# SUSFBN50B

## Order Product Code

**SUSFBN50B 18 D22**



- Chain ..... **No.50**
- Chain Pitch ..... (P) **15.875 mm**
- Roller Link Inner Width ... (W) **9.53 mm**
- Roller Outside Diameter ... (Dr) **10.16 mm**
- Tooth Width ..... (T) **8.7 mm**



ⓘ Sprockets with a ★ symbol for BD have a channel in the boss exterior.

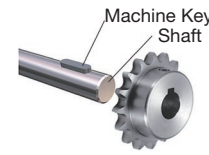
No. of Teeth	S	GD
10	6.4	34
11	6.4	39
12	6.4	44
13	6.4	49

**m** Stainless Steel **GB** 304

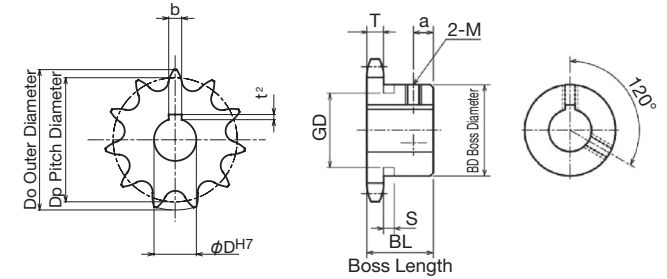
TYPE	SUSFBN50B										
Product Code	No. of Teeth	$\phi D^{H7}$	Keyway bxt <sup>2</sup>	M	Do	Dp	BD	BL	a	Weight kg	
SUSFBN50B10D20	10	20	6x2.8	6	58	51.37	★40	25	5	0.27	
SUSFBN50B10D22	10	22	6x2.8	6	58	51.37	★40	25	5	0.27	
SUSFBN50B11D20	11	20	6x2.8	6	64	56.35	★45.5	25	5	0.33	
SUSFBN50B11D22	11	22	6x2.8	6	64	56.35	★45.5	25	5	0.33	
SUSFBN50B11D24	11	24	8x3.3	*6	64	56.35	★45.5	25	5	0.33	
SUSFBN50B11D25	11	25	8x3.3	*6	64	56.35	★45.5	25	5	0.33	
SUSFBN50B12D20	12	20	6x2.8	6	69	61.34	★50	25	5	0.41	
SUSFBN50B12D22	12	22	6x2.8	6	69	61.34	★50	25	5	0.41	
SUSFBN50B12D24	12	24	8x3.3	*6	69	61.34	★50	25	5	0.41	
SUSFBN50B12D25	12	25	8x3.3	*6	69	61.34	★50	25	5	0.41	
SUSFBN50B13D20	13	20	6x2.8	6	74	66.34	★51	25	5	0.46	
SUSFBN50B13D22	13	22	6x2.8	6	74	66.34	★51	25	5	0.46	
SUSFBN50B13D24	13	24	8x3.3	*6	74	66.34	★51	25	5	0.46	
SUSFBN50B13D25	13	25	8x3.3	*6	74	66.34	★51	25	5	0.46	
SUSFBN50B14D20	14	20	6x2.8	6	79	71.34	52	25	7	0.52	
SUSFBN50B14D22	14	22	6x2.8	6	79	71.34	52	25	7	0.52	
SUSFBN50B14D24	14	24	8x3.3	8	79	71.34	52	25	7	0.52	
SUSFBN50B14D25	14	25	8x3.3	8	79	71.34	52	25	7	0.52	
SUSFBN50B14D28	14	28	8x3.3	8	79	71.34	52	25	7	0.52	
SUSFBN50B14D30	14	30	8x3.3	8	79	71.34	52	25	7	0.52	
SUSFBN50B15D20	15	20	6x2.8	6	84	76.35	57	25	7	0.62	
SUSFBN50B15D22	15	22	6x2.8	6	84	76.35	57	25	7	0.62	
SUSFBN50B15D24	15	24	8x3.3	8	84	76.35	57	25	7	0.62	
SUSFBN50B15D25	15	25	8x3.3	8	84	76.35	57	25	7	0.62	
SUSFBN50B15D28	15	28	8x3.3	8	84	76.35	57	25	7	0.62	
SUSFBN50B15D30	15	30	8x3.3	8	84	76.35	57	25	7	0.62	
SUSFBN50B15D32	15	32	10x3.3	8	84	76.35	57	25	7	0.62	

\*M is a set screw. \* The seal set screws differ from the usual due to the boss type.

# SUS FBN Finished Bore Sprocket New JIS Keyway Specification



Use together with the KANA machine key. Refer to P.334 to P.335



TYPE	SUSFBN50B										
Product Code	No. of Teeth	$\phi D^{H7}$	Keyway bxt <sup>2</sup>	M	Do	Dp	BD	BL	a	Weight kg	
SUSFBN50B16D20	16	20	6x2.8	6	89	81.37	62	25	7	0.72	
SUSFBN50B16D22	16	22	6x2.8	6	89	81.37	62	25	7	0.72	
SUSFBN50B16D24	16	24	8x3.3	8	89	81.37	62	25	7	0.72	
SUSFBN50B16D25	16	25	8x3.3	8	89	81.37	62	25	7	0.72	
SUSFBN50B16D28	16	28	8x3.3	8	89	81.37	62	25	7	0.72	
SUSFBN50B16D30	16	30	8x3.3	8	89	81.37	62	25	7	0.72	
SUSFBN50B16D32	16	32	10x3.3	8	89	81.37	62	25	7	0.72	
SUSFBN50B16D38	16	38	10x3.3	8	89	81.37	62	25	7	0.72	
SUSFBN50B17D20	17	20	6x2.8	6	94	86.39	67	25	7	0.83	
SUSFBN50B17D22	17	22	6x2.8	6	94	86.39	67	25	7	0.83	
SUSFBN50B17D24	17	24	8x3.3	8	94	86.39	67	25	7	0.83	
SUSFBN50B17D25	17	25	8x3.3	8	94	86.39	67	25	7	0.83	
SUSFBN50B17D28	17	28	8x3.3	8	94	86.39	67	25	7	0.83	
SUSFBN50B17D30	17	30	8x3.3	8	94	86.39	67	25	7	0.83	
SUSFBN50B17D32	17	32	10x3.3	8	94	86.39	67	25	7	0.83	
SUSFBN50B17D35	17	35	10x3.3	8	94	86.39	67	25	7	0.83	
SUSFBN50B17D38	17	38	10x3.3	8	94	86.39	67	25	7	0.83	
SUSFBN50B18D20	18	20	6x2.8	6	100	91.42	72	28	8	1.00	
SUSFBN50B18D22	18	22	6x2.8	6	100	91.42	72	28	8	1.00	
SUSFBN50B18D24	18	24	8x3.3	8	100	91.42	72	28	8	1.00	
SUSFBN50B18D25	18	25	8x3.3	8	100	91.42	72	28	8	1.00	
SUSFBN50B18D28	18	28	8x3.3	8	100	91.42	72	28	8	1.00	
SUSFBN50B18D30	18	30	8x3.3	8	100	91.42	72	28	8	1.00	
SUSFBN50B18D32	18	32	10x3.3	8	100	91.42	72	28	8	1.00	
SUSFBN50B18D35	18	35	10x3.3	8	100	91.42	72	28	8	1.00	
SUSFBN50B18D38	18	38	10x3.3	8	100	91.42	72	28	8	1.00	
SUSFBN50B18D40	18	40	12x3.3	8	100	91.42	72	28	8	1.00	

\*M is a set screw. \* The seal set screws differ from the usual due to the boss type.

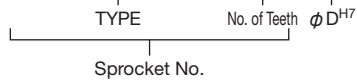


\*Products with long screw holes also include products subject to counter boring

# SUSFBN50B

## Order Product Code

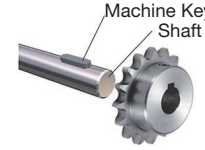
**SUSFBN50B 18 D22**



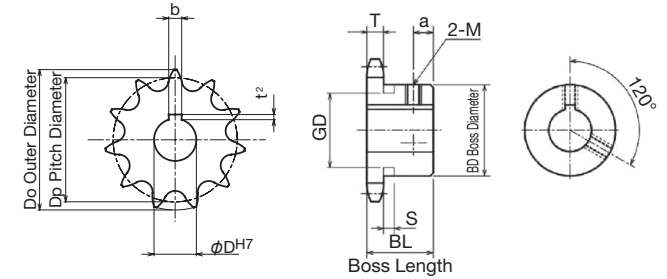
- Chain ..... No.50
- Chain Pitch ..... (P) 15.875 mm
- Roller Link Inner Width ... (W) 9.53 mm
- Roller Outside Diameter ... (Dr) 10.16 mm
- Tooth Width ..... (T) 8.7 mm



# SUS FBN Finished Bore Sprocket New JIS Keyway Specification



Use together with the KANA machine key. Refer to P.334 to P.335



TYPE	SUSFBN50B									
	m Stainless Steel GB 304									
Product Code	No. of Teeth	φ D <sup>H7</sup>	Keyway b x t <sup>2</sup>	M	Do	Dp	BD	BL	a	Weight kg
SUSFBN50B19D20	19	20	6×2.8	6	105	96.45	73	28	8	1.10
SUSFBN50B19D22	19	22	6×2.8	6	105	96.45	73	28	8	1.10
SUSFBN50B19D24	19	24	8×3.3	8	105	96.45	73	28	8	1.10
SUSFBN50B19D25	19	25	8×3.3	8	105	96.45	73	28	8	1.10
SUSFBN50B19D28	19	28	8×3.3	8	105	96.45	73	28	8	1.10
SUSFBN50B19D30	19	30	8×3.3	8	105	96.45	73	28	8	1.10
SUSFBN50B19D32	19	32	10×3.3	8	105	96.45	73	28	8	1.10
SUSFBN50B19D35	19	35	10×3.3	8	105	96.45	73	28	8	1.10
SUSFBN50B19D38	19	38	10×3.3	8	105	96.45	73	28	8	1.10
SUSFBN50B19D40	19	40	12×3.3	8	105	96.45	73	28	8	1.10
SUSFBN50B20D20	20	20	6×2.8	6	110	101.48	73	28	8	1.20
SUSFBN50B20D22	20	22	6×2.8	6	110	101.48	73	28	8	1.20
SUSFBN50B20D24	20	24	8×3.3	8	110	101.48	73	28	8	1.20
SUSFBN50B20D25	20	25	8×3.3	8	110	101.48	73	28	8	1.20
SUSFBN50B20D28	20	28	8×3.3	8	110	101.48	73	28	8	1.20
SUSFBN50B20D30	20	30	8×3.3	8	110	101.48	73	28	8	1.20
SUSFBN50B20D32	20	32	10×3.3	8	110	101.48	73	28	8	1.20
SUSFBN50B20D35	20	35	10×3.3	8	110	101.48	73	28	8	1.20
SUSFBN50B20D38	20	38	10×3.3	8	110	101.48	73	28	8	1.20
SUSFBN50B20D40	20	40	12×3.3	8	110	101.48	73	28	8	1.20
SUSFBN50B21D20	21	20	6×2.8	6	115	106.51	73	28	8	1.20
SUSFBN50B21D25	21	25	8×3.3	8	115	106.51	73	28	8	1.20
SUSFBN50B21D30	21	30	8×3.3	8	115	106.51	73	28	8	1.20
SUSFBN50B21D35	21	35	10×3.3	8	115	106.51	73	28	8	1.20
SUSFBN50B21D40	21	40	12×3.3	8	115	106.51	73	28	8	1.20
SUSFBN50B22D20	22	20	6×2.8	6	120	111.55	73	28	8	1.30
SUSFBN50B22D25	22	25	8×3.3	8	120	111.55	73	28	8	1.30
SUSFBN50B22D30	22	30	8×3.3	8	120	111.55	73	28	8	1.30
SUSFBN50B22D35	22	35	10×3.3	8	120	111.55	73	28	8	1.30
SUSFBN50B22D40	22	40	12×3.3	8	120	111.55	73	28	8	1.30

\*M is a set screw. \* The seal set screws differ from the usual due to the boss type.

TYPE	SUSFBN50B									
	m Stainless Steel GB 304									
Product Code	No. of Teeth	φ D <sup>H7</sup>	Keyway b x t <sup>2</sup>	M	Do	Dp	BD	BL	a	Weight kg
SUSFBN50B23D20	23	20	6×2.8	6	125	116.58	73	28	8	1.30
SUSFBN50B23D25	23	25	8×3.3	8	125	116.58	73	28	8	1.30
SUSFBN50B23D30	23	30	8×3.3	8	125	116.58	73	28	8	1.30
SUSFBN50B23D35	23	35	10×3.3	8	125	116.58	73	28	8	1.30
SUSFBN50B24D20	24	20	6×2.8	6	130	121.62	73	28	8	1.40
SUSFBN50B24D25	24	25	8×3.3	8	130	121.62	73	28	8	1.40
SUSFBN50B24D30	24	30	8×3.3	8	130	121.62	73	28	8	1.40
SUSFBN50B24D35	24	35	10×3.3	8	130	121.62	73	28	8	1.40
SUSFBN50B25D20	25	20	6×2.8	6	135	126.66	73	28	8	1.50
SUSFBN50B25D25	25	25	8×3.3	8	135	126.66	73	28	8	1.50
SUSFBN50B25D30	25	30	8×3.3	8	135	126.66	73	28	8	1.50
SUSFBN50B25D35	25	35	10×3.3	8	135	126.66	73	28	8	1.50
SUSFBN50B25D40	25	40	12×3.3	8	135	126.66	73	28	8	1.50
SUSFBN50B26D20	26	20	6×2.8	6	140	131.70	73	28	8	1.50
SUSFBN50B26D25	26	25	8×3.3	8	140	131.70	73	28	8	1.50
SUSFBN50B26D30	26	30	8×3.3	8	140	131.70	73	28	8	1.50
SUSFBN50B26D35	26	35	10×3.3	8	140	131.70	73	28	8	1.50
SUSFBN50B28D20	28	20	6×2.8	6	150	141.79	73	28	8	1.60
SUSFBN50B28D25	28	25	8×3.3	8	150	141.79	73	28	8	1.60
SUSFBN50B28D30	28	30	8×3.3	8	150	141.79	73	28	8	1.60
SUSFBN50B28D35	28	35	10×3.3	8	150	141.79	73	28	8	1.60
SUSFBN50B28D40	28	40	12×3.3	8	150	141.79	73	28	8	1.60
SUSFBN50B30D20	30	20	6×2.8	6	161	151.87	73	28	8	1.80
SUSFBN50B30D25	30	25	8×3.3	8	161	151.87	73	28	8	1.80
SUSFBN50B30D30	30	30	8×3.3	8	161	151.87	73	28	8	1.80
SUSFBN50B30D35	30	35	10×3.3	8	161	151.87	73	28	8	1.80
SUSFBN50B30D40	30	40	12×3.3	8	161	151.87	73	28	8	1.80
SUSFBN50B32D25	32	25	8×3.3	8	171	161.96	73	28	8	1.90
SUSFBN50B32D30	32	30	8×3.3	8	171	161.96	73	28	8	1.90
SUSFBN50B32D35	32	35	10×3.3	8	171	161.96	73	28	8	1.90
SUSFBN50B35D25	35	25	8×3.3	8	186	177.10	73	28	8	2.20
SUSFBN50B35D30	35	30	8×3.3	8	186	177.10	73	28	8	2.20
SUSFBN50B35D35	35	35	10×3.3	8	186	177.10	73	28	8	2.20

\*M is a set screw. \* The seal set screws differ from the usual due to the boss type.



\*Products with long screw holes also include products subject to counter boring