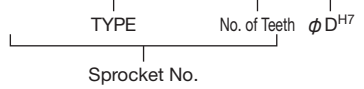


SUSFBN40B

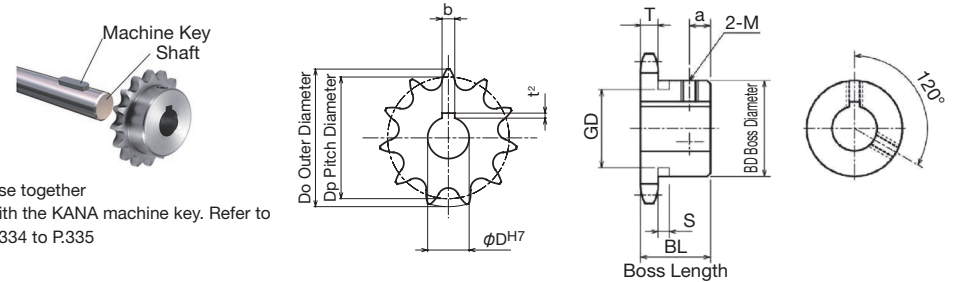
Order Product Code

SUSFBN 40B 20 D20



- Chain No.40
- Chain Pitch (P) 12.70mm
- Roller Link Inner Width (W) 7.95mm
- Roller Outside Diameter (Dr) 7.92mm
- Tooth Width (T) 7.2 mm

SUS FBN Finished Bore Sprocket New JIS Keyway Specification



Use together with the KANA machine key. Refer to P.334 to P.335

TYPE	SUSFBN40B										
	m Stainless Steel GB 304										
Product Code	No. of Teeth	φ D ^{H7}	Keyway b×t ²	M	Do	Dp	BD	BL	a	Weight kg	
SUSFBN40B10D12	10	12	4×1.8	5	46	41.10	★32	22	5	0.14	
SUSFBN40B10D15	10	15	5×2.3	6	46	41.10	★32	22	5	0.14	
SUSFBN40B10D16	10	16	5×2.3	6	46	41.10	★32	22	5	0.14	
SUSFBN40B11D15	11	15	5×2.3	6	51	45.08	★36	22	5	0.19	
SUSFBN40B11D16	11	16	5×2.3	6	51	45.08	★36	22	5	0.19	
SUSFBN40B11D17	11	17	5×2.3	6	51	45.08	★36	22	5	0.19	
SUSFBN40B11D18	11	18	6×2.8	6	51	45.08	★36	22	5	0.19	
SUSFBN40B11D20	11	20	6×2.8	6	51	45.08	★36	22	5	0.19	
SUSFBN40B12D12	12	12	4×1.8	5	55	49.07	★40	22	5	0.22	
SUSFBN40B12D15	12	15	5×2.3	6	55	49.07	★40	22	5	0.22	
SUSFBN40B12D16	12	16	5×2.3	6	55	49.07	★40	22	5	0.22	
SUSFBN40B12D17	12	17	5×2.3	6	55	49.07	★40	22	5	0.22	
SUSFBN40B12D18	12	18	6×2.8	6	55	49.07	★40	22	5	0.22	
SUSFBN40B12D20	12	20	6×2.8	6	55	49.07	★40	22	5	0.22	
SUSFBN40B13D15	13	15	5×2.3	6	59	53.07	37	22	6	0.23	
SUSFBN40B13D16	13	16	5×2.3	6	59	53.07	37	22	6	0.23	
SUSFBN40B13D18	13	18	6×2.8	6	59	53.07	37	22	6	0.23	
SUSFBN40B13D20	13	20	6×2.8	6	59	53.07	37	22	6	0.23	
SUSFBN40B14D15	14	15	5×2.3	6	63	57.07	42	22	6	0.28	
SUSFBN40B14D16	14	16	5×2.3	6	63	57.07	42	22	6	0.28	
SUSFBN40B14D17	14	17	5×2.3	6	63	57.07	42	22	6	0.28	
SUSFBN40B14D18	14	18	6×2.8	6	63	57.07	42	22	6	0.28	
SUSFBN40B14D19	14	19	6×2.8	6	63	57.07	42	22	6	0.28	
SUSFBN40B14D20	14	20	6×2.8	6	63	57.07	42	22	6	0.28	
SUSFBN40B14D22	14	22	6×2.8	6	63	57.07	42	22	6	0.28	
SUSFBN40B14D24	14	24	8×3.3	8	63	57.07	42	22	6	0.28	
SUSFBN40B14D25	14	25	8×3.3	*6	63	57.07	42	22	6	0.28	
SUSFBN40B15D15	15	15	5×2.3	6	67	61.08	46	22	6	0.34	
SUSFBN40B15D16	15	16	5×2.3	6	67	61.08	46	22	6	0.34	
SUSFBN40B15D17	15	17	5×2.3	6	67	61.08	46	22	6	0.34	
SUSFBN40B15D18	15	18	6×2.8	6	67	61.08	46	22	6	0.34	
SUSFBN40B15D19	15	19	6×2.8	6	67	61.08	46	22	6	0.34	
SUSFBN40B15D20	15	20	6×2.8	6	67	61.08	46	22	6	0.34	
SUSFBN40B15D22	15	22	6×2.8	6	67	61.08	46	22	6	0.34	
SUSFBN40B15D24	15	24	8×3.3	8	67	61.08	46	22	6	0.34	
SUSFBN40B15D25	15	25	8×3.3	8	67	61.08	46	22	6	0.34	
SUSFBN40B15D28	15	28	8×3.3	8	67	61.08	46	22	6	0.34	
SUSFBN40B16D15	16	15	5×2.3	6	71	65.10	50	22	6	0.40	
SUSFBN40B16D16	16	16	5×2.3	6	71	65.10	50	22	6	0.40	
SUSFBN40B16D17	16	17	5×2.3	6	71	65.10	50	22	6	0.40	

*M is a set screw. * The seal set screws differ from the usual due to the boss type.

TYPE	SUSFBN40B										
	m Stainless Steel GB 304										
Product Code	No. of Teeth	φ D ^{H7}	Keyway b×t ²	M	Do	Dp	BD	BL	a	Weight kg	
SUSFBN40B16D18	16	18	6×2.8	6	71	65.10	50	22	6	0.40	
SUSFBN40B16D19	16	19	6×2.8	6	71	65.10	50	22	6	0.40	
SUSFBN40B16D20	16	20	6×2.8	6	71	65.10	50	22	6	0.40	
SUSFBN40B16D22	16	22	6×2.8	6	71	65.10	50	22	6	0.40	
SUSFBN40B16D24	16	24	8×3.3	8	71	65.10	50	22	6	0.40	
SUSFBN40B16D25	16	25	8×3.3	8	71	65.10	50	22	6	0.40	
SUSFBN40B16D28	16	28	8×3.3	8	71	65.10	50	22	6	0.40	
SUSFBN40B16D30	16	30	8×3.3	8	71	65.10	50	22	6	0.40	
SUSFBN40B17D15	17	15	5×2.3	6	76	69.12	54	22	6	0.46	
SUSFBN40B17D16	17	16	5×2.3	6	76	69.12	54	22	6	0.46	
SUSFBN40B17D18	17	18	6×2.8	6	76	69.12	54	22	6	0.46	
SUSFBN40B17D19	17	19	6×2.8	6	76	69.12	54	22	6	0.46	
SUSFBN40B17D20	17	20	6×2.8	6	76	69.12	54	22	6	0.46	
SUSFBN40B17D22	17	22	6×2.8	6	76	69.12	54	22	6	0.46	
SUSFBN40B17D24	17	24	8×3.3	8	76	69.12	54	22	6	0.46	
SUSFBN40B17D25	17	25	8×3.3	8	76	69.12	54	22	6	0.46	
SUSFBN40B17D28	17	28	8×3.3	8	76	69.12	54	22	6	0.46	
SUSFBN40B17D30	17	30	8×3.3	8	76	69.12	54	22	6	0.46	
SUSFBN40B18D15	18	15	5×2.3	6	80	73.14	57	22	6	0.51	
SUSFBN40B18D16	18	16	5×2.3	6	80	73.14	57	22	6	0.51	
SUSFBN40B18D18	18	18	6×2.8	6	80	73.14	57	22	6	0.51	
SUSFBN40B18D19	18	19	6×2.8	6	80	73.14	57	22	6	0.51	
SUSFBN40B18D20	18	20	6×2.8	6	80	73.14	57	22	6	0.51	
SUSFBN40B18D22	18	22	6×2.8	6	80	73.14	57	22	6	0.51	
SUSFBN40B18D24	18	24	8×3.3	8	80	73.14	57	22	6	0.51	
SUSFBN40B18D25	18	25	8×3.3	8	80	73.14	57	22	6	0.51	
SUSFBN40B18D28	18	28	8×3.3	8	80	73.14	57	22	6	0.51	
SUSFBN40B18D30	18	30	8×3.3	8	80	73.14	57	22	6	0.51	
SUSFBN40B19D15	19	15	5×2.3	6	84	77.16	62	22	6	0.59	
SUSFBN40B19D16	19	16	5×2.3	6	84	77.16	62	22	6	0.59	
SUSFBN40B19D18	19	18	6×2.8	6	84	77.16	62	22	6	0.59	
SUSFBN40B19D19	19	19	6×2.8	6	84	77.16	62	22	6	0.59	

*M is a set screw. * The seal set screws differ from the usual due to the boss type.



! Sprockets with a ★ symbol for BD have a channel in the boss exterior.

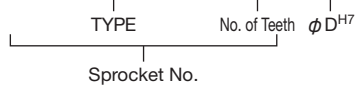
No. of Teeth	S	GD
10		27
11	5.2	31
12	5.2	35

! *Products with long screw holes also include products subject to counter boring
Caution

SUSFBN40B

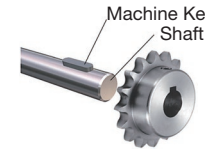
Order Product Code

SUSFBN 40B 20 D20

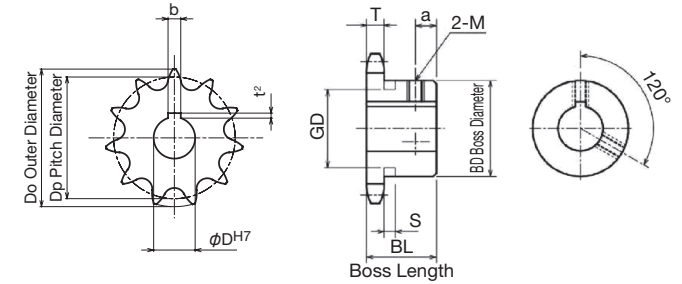


- Chain No.40
- Chain Pitch (P) 12.70mm
- Roller Link Inner Width (W) 7.95mm
- Roller Outside Diameter (Dr) 7.92mm
- Tooth Width (T) 7.2 mm

SUS FBN Finished Bore Sprocket New JIS Keyway Specification



Use together with the KANA machine key. Refer to P.334 to P.335



TYPE	SUSFBN40B										
	m Stainless Steel GB 304										
Product Code	No. of Teeth	φ D ^{H7}	Keyway b×t ²	M	Do	Dp	BD	BL	a	Weight kg	
SUSFBN40B19D20	19	20	6×2.8	6	84	77.16	62	22	6	0.59	
SUSFBN40B19D22	19	22	6×2.8	6	84	77.16	62	22	6	0.59	
SUSFBN40B19D24	19	24	8×3.3	8	84	77.16	62	22	6	0.59	
SUSFBN40B19D25	19	25	8×3.3	8	84	77.16	62	22	6	0.59	
SUSFBN40B19D28	19	28	8×3.3	8	84	77.16	62	22	6	0.59	
SUSFBN40B19D30	19	30	8×3.3	8	84	77.16	62	22	6	0.59	
SUSFBN40B20D15	20	15	5×2.3	6	88	81.18	67	25	7	0.76	
SUSFBN40B20D16	20	16	5×2.3	6	88	81.18	67	25	7	0.76	
SUSFBN40B20D18	20	18	6×2.8	6	88	81.18	67	25	7	0.76	
SUSFBN40B20D19	20	19	6×2.8	6	88	81.18	67	25	7	0.76	
SUSFBN40B20D20	20	20	6×2.8	6	88	81.18	67	25	7	0.76	
SUSFBN40B20D22	20	22	6×2.8	6	88	81.18	67	25	7	0.76	
SUSFBN40B20D24	20	24	8×3.3	8	88	81.18	67	25	7	0.76	
SUSFBN40B20D25	20	25	8×3.3	8	88	81.18	67	25	7	0.76	
SUSFBN40B20D28	20	28	8×3.3	8	88	81.18	67	25	7	0.76	
SUSFBN40B20D30	20	30	8×3.3	8	88	81.18	67	25	7	0.76	
SUSFBN40B21D18	21	18	6×2.8	6	92	85.21	71	25	7	0.85	
SUSFBN40B21D20	21	20	6×2.8	6	92	85.21	71	25	7	0.85	
SUSFBN40B21D22	21	22	6×2.8	6	92	85.21	71	25	7	0.85	
SUSFBN40B21D24	21	24	8×3.3	8	92	85.21	71	25	7	0.85	
SUSFBN40B21D25	21	25	8×3.3	8	92	85.21	71	25	7	0.85	
SUSFBN40B21D28	21	28	8×3.3	8	92	85.21	71	25	7	0.85	
SUSFBN40B21D30	21	30	8×3.3	8	92	85.21	71	25	7	0.85	
SUSFBN40B21D32	21	32	10×3.3	8	92	85.21	71	25	7	0.85	
SUSFBN40B22D18	22	18	6×2.8	6	96	89.24	75	25	7	0.95	
SUSFBN40B22D20	22	20	6×2.8	6	96	89.24	75	25	7	0.95	
SUSFBN40B22D22	22	22	6×2.8	6	96	89.24	75	25	7	0.95	
SUSFBN40B22D24	22	24	8×3.3	8	96	89.24	75	25	7	0.95	
SUSFBN40B22D25	22	25	8×3.3	8	96	89.24	75	25	7	0.95	
SUSFBN40B22D28	22	28	8×3.3	8	96	89.24	75	25	7	0.95	
SUSFBN40B22D30	22	30	8×3.3	8	96	89.24	75	25	7	0.95	
SUSFBN40B23D18	23	18	6×2.8	6	100	93.27	77	25	7	1.00	
SUSFBN40B23D20	23	20	6×2.8	6	100	93.27	77	25	7	1.00	
SUSFBN40B23D22	23	22	6×2.8	6	100	93.27	77	25	7	1.00	
SUSFBN40B23D24	23	24	8×3.3	8	100	93.27	77	25	7	1.00	
SUSFBN40B23D25	23	25	8×3.3	8	100	93.27	77	25	7	1.00	
SUSFBN40B23D28	23	28	8×3.3	8	100	93.27	77	25	7	1.00	
SUSFBN40B23D30	23	30	8×3.3	8	100	93.27	77	25	7	1.00	
SUSFBN40B24D18	24	18	6×2.8	6	104	97.30	63	25	7	0.84	
SUSFBN40B24D20	24	20	6×2.8	6	104	97.30	63	25	7	0.84	

*M is a set screw. * The seal set screws differ from the usual due to the boss type.

TYPE	SUSFBN40B										
	m Stainless Steel GB 304										
Product Code	No. of Teeth	φ D ^{H7}	Keyway b×t ²	M	Do	Dp	BD	BL	a	Weight kg	
SUSFBN40B24D22	24	22	6×2.8	6	104	97.30	63	25	7	0.84	
SUSFBN40B24D24	24	24	8×3.3	8	104	97.30	63	25	7	0.84	
SUSFBN40B24D25	24	25	8×3.3	8	104	97.30	63	25	7	0.84	
SUSFBN40B24D28	24	28	8×3.3	8	104	97.30	63	25	7	0.84	
SUSFBN40B24D30	24	30	8×3.3	8	104	97.30	63	25	7	0.84	
SUSFBN40B25D18	25	18	6×2.8	6	108	101.33	63	25	7	0.88	
SUSFBN40B25D20	25	20	6×2.8	6	108	101.33	63	25	7	0.88	
SUSFBN40B25D22	25	22	6×2.8	6	108	101.33	63	25	7	0.88	
SUSFBN40B25D24	25	24	8×3.3	8	108	101.33	63	25	7	0.88	
SUSFBN40B25D25	25	25	8×3.3	8	108	101.33	63	25	7	0.88	
SUSFBN40B25D28	25	28	8×3.3	8	108	101.33	63	25	7	0.88	
SUSFBN40B25D30	25	30	8×3.3	8	108	101.33	63	25	7	0.88	
SUSFBN40B26D20	26	20	6×2.8	6	112	105.36	63	25	7	0.92	
SUSFBN40B26D22	26	22	6×2.8	6	112	105.36	63	25	7	0.92	
SUSFBN40B26D25	26	25	8×3.3	8	112	105.36	63	25	7	0.92	
SUSFBN40B26D30	26	30	8×3.3	8	112	105.36	63	25	7	0.92	
SUSFBN40B28D20	28	20	6×2.8	6	120	113.43	63	25	7	1.00	
SUSFBN40B28D22	28	22	6×2.8	6	120	113.43	63	25	7	1.00	
SUSFBN40B28D25	28	25	8×3.3	8	120	113.43	63	25	7	1.00	
SUSFBN40B28D30	28	30	8×3.3	8	120	113.43	63	25	7	1.00	
SUSFBN40B30D20	30	20	6×2.8	6	128	121.50	63	25	7	1.10	
SUSFBN40B30D22	30	22	6×2.8	6	128	121.50	63	25	7	1.10	
SUSFBN40B30D25	30	25	8×3.3	8	128	121.50	63	25	7	1.10	
SUSFBN40B30D30	30	30	8×3.3	8	128	121.50	63	25	7	1.10	
SUSFBN40B32D20	32	20	6×2.8	6	137	129.57	68	28	10	1.30	
SUSFBN40B32D22	32	22	6×2.8	6	137	129.57	68	28	10	1.30	
SUSFBN40B32D25	32	25	8×3.3	8	137	129.57	68	28	10	1.30	
SUSFBN40B32D30	32	30	8×3.3	8	137	129.57	68	28	10	1.30	
SUSFBN40B35D20	35	20	6×2.8	6	149	141.68	68	28	10	1.40	
SUSFBN40B35D22	35	22	6×2.8	6	149	141.68	68	28	10	1.40	
SUSFBN40B35D25	35	25	8×3.3	8	149	141.68	68	28	10	1.40	
SUSFBN40B35D30	35	30	8×3.3	8	149	141.68	68	28	10	1.40	
SUSFBN40B36D20	36	20	6×2.8	6	153	145.72	68	28	10	1.50	
SUSFBN40B36D22	36	22	6×2.8	6	153	145.72	68	28	10	1.50	
SUSFBN40B36D25	36	25	8×3.3	8	153	145.72	68	28	10	1.50	
SUSFBN40B36D30	36	30	8×3.3	8	153	145.72	68	28	10	1.50	
SUSFBN40B40D20	40	20	6×2.8	6	169	161.87	68	28	10	1.70	
SUSFBN40B40D22	40	22	6×2.8	6	169	161.87	68	28	10	1.70	
SUSFBN40B40D25	40	25	8×3.3	8	169	161.87	68	28	10	1.70	
SUSFBN40B40D30	40	30	8×3.3	8	169	161.87	68	28	10	1.70	



*Products with long screw holes also include products subject to counter boring