

# SUSFBN35B

## Order Product Code

**SUSFBN35B 17 D12**

TYPE No. of Teeth  $\phi$  D<sup>H7</sup>  
Sprocket No.



## Order Product Code K4 (Part is a special shaft diameter specification only)

**SUSFBN35B 12 D10 K4**

TYPE No. of Teeth  $\phi$  D<sup>H7</sup> Keyway  
Sprocket No.

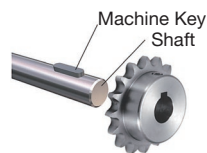
- Chain ..... No.35
- Chain Pitch ..... (P) 9.525 mm
- Bushing Link Inner Width ..... (W) 4.78 mm
- Bushing Outside Diameter ..... (Dr) 5.08 mm
- Tooth Width ..... (T) 4.3 mm

m Stainless Steel GB 304

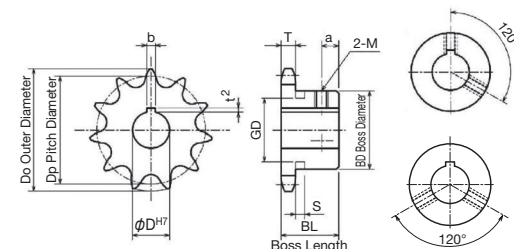
TYPE	SUSFBN35B										
Product Code	No. of Teeth	$\phi$ D <sup>H7</sup>	Keyway b×t <sup>2</sup>	M	Do	Dp	BD	BL	a	Weight kg	
SUSFBN35B10D10	10	10	3×1.4	4	34	30.82	★24.5	20	6	0.08	
SUSFBN35B10D10K4	10	10	4×1.8	4	34	30.82	★24.5	20	6	0.08	
SUSFBN35B10D12	10	12	4×1.8	5	34	30.82	★24.5	20	6	0.08	
SUSFBN35B11D10	11	10	3×1.4	4	38	33.81	★27	20	6	0.09	
SUSFBN35B11D10K4	11	10	4×1.8	4	38	33.81	★27	20	6	0.09	
SUSFBN35B11D12	11	12	4×1.8	5	38	33.81	★27	20	6	0.09	
SUSFBN35B12D10	12	10	3×1.4	4	41	36.80	★30.5	20	6	0.12	
SUSFBN35B12D10K4	12	10	4×1.8	4	41	36.80	★30.5	20	6	0.12	
SUSFBN35B12D12	12	12	4×1.8	5	41	36.80	★30.5	20	6	0.12	
SUSFBN35B12D15	12	15	5×2.3	6	41	36.80	★30.5	20	6	0.12	
SUSFBN35B13D10	13	10	3×1.4	4	44	39.80	★32	20	6	0.12	
SUSFBN35B13D10K4	13	10	4×1.8	4	44	39.80	★32	20	6	0.12	
SUSFBN35B13D12	13	12	4×1.8	5	44	39.80	★32	20	6	0.12	
SUSFBN35B13D15	13	15	5×2.3	6	44	39.80	★32	20	6	0.12	
SUSFBN35B13D16	13	16	5×2.3	6	44	39.80	★32	20	6	0.12	
SUSFBN35B13D18	13	<span style="border: 1px solid black; padding: 0 2px;">18</span>	6×2.8	6	44	39.80	★32	20	6	0.12	
SUSFBN35B13D20	13	<span style="border: 1px solid black; padding: 0 2px;">20</span>	6×2.8	6	44	39.80	★32	20	6	0.12	
SUSFBN35B14D10	14	10	3×1.4	4	47	42.81	32	20	6	0.12	
SUSFBN35B14D10K4	14	10	4×1.8	4	47	42.81	32	20	6	0.12	
SUSFBN35B14D12	14	12	4×1.8	5	47	42.81	32	20	6	0.12	
SUSFBN35B14D15	14	15	5×2.3	6	47	42.81	32	20	6	0.12	
SUSFBN35B14D16	14	16	5×2.3	6	47	42.81	32	20	6	0.12	
SUSFBN35B15D10	15	10	3×1.4	4	51	45.81	35	20	6	0.16	
SUSFBN35B15D10K4	15	10	4×1.8	4	51	45.81	35	20	6	0.16	
SUSFBN35B15D12	15	12	4×1.8	5	51	45.81	35	20	6	0.16	
SUSFBN35B15D15	15	15	5×2.3	6	51	45.81	35	20	6	0.16	
SUSFBN35B15D16	15	16	5×2.3	6	51	45.81	35	20	6	0.16	
SUSFBN35B15D18	15	18	6×2.8	6	51	45.81	35	20	6	0.16	
SUSFBN35B15D20	15	20	6×2.8	6	51	45.81	35	20	6	0.16	
SUSFBN35B16D10	16	10	3×1.4	4	54	48.82	37	20	6	0.19	
SUSFBN35B16D10K4	16	10	4×1.8	4	54	48.82	37	20	6	0.19	
SUSFBN35B16D12	16	12	4×1.8	5	54	48.82	37	20	6	0.19	
SUSFBN35B16D15	16	15	5×2.3	6	54	48.82	37	20	6	0.19	
SUSFBN35B16D16	16	16	5×2.3	6	54	48.82	37	20	6	0.19	
SUSFBN35B16D18	16	18	6×2.8	6	54	48.82	37	20	6	0.19	
SUSFBN35B16D20	16	20	6×2.8	6	54	48.82	37	20	6	0.19	
SUSFBN35B17D12	17	12	4×1.8	5	57	51.84	41	20	6	0.22	
SUSFBN35B17D15	17	15	5×2.3	6	57	51.84	41	20	6	0.22	
SUSFBN35B17D16	17	16	5×2.3	6	57	51.84	41	20	6	0.22	
SUSFBN35B17D18	17	18	6×2.8	6	57	51.84	41	20	6	0.22	

\*M is a set screw. \* The seal set screws differ from the usual due to the boss type.

# SUS FBN Finished Bore Sprocket D10 K4×1.8 Specification SUS FBN Finished Bore Sprocket New JIS Keyway Specification



Use together with the KANA machine key. Refer to P.334 to P.335



①  $\phi$  D<sup>H7</sup> mark set screw is set at a location other than the keyway (above figure).

TYPE	SUSFBN35B										
Product Code	No. of Teeth	$\phi$ D <sup>H7</sup>	Keyway b×t <sup>2</sup>	M	Do	Dp	BD	BL	a	Weight kg	
SUSFBN35B17D20	17	20	6×2.8	6	57	51.84	41	20	6	0.22	
SUSFBN35B17D24	17	24	8×3.3	8	57	51.84	41	20	6	0.22	
SUSFBN35B18D12	18	12	4×1.8	5	60	54.85	44	20	6	0.25	
SUSFBN35B18D15	18	15	5×2.3	6	60	54.85	44	20	6	0.25	
SUSFBN35B18D16	18	16	5×2.3	6	60	54.85	44	20	6	0.25	
SUSFBN35B18D18	18	18	6×2.8	6	60	54.85	44	20	6	0.25	
SUSFBN35B18D20	18	20	6×2.8	6	60	54.85	44	20	6	0.25	
SUSFBN35B20D12	20	12	4×1.8	5	66	60.89	50	20	6	0.32	
SUSFBN35B20D15	20	15	5×2.3	6	66	60.89	50	20	6	0.32	
SUSFBN35B20D16	20	16	5×2.3	6	66	60.89	50	20	6	0.32	
SUSFBN35B20D18	20	18	6×2.8	6	66	60.89	50	20	6	0.32	
SUSFBN35B20D20	20	20	6×2.8	6	66	60.89	50	20	6	0.32	
SUSFBN35B20D25	20	25	8×3.3	8	66	60.89	50	20	6	0.32	
SUSFBN35B21D12	21	12	4×1.8	5	69	63.91	53	20	6	0.36	
SUSFBN35B21D15	21	15	5×2.3	6	69	63.91	53	20	6	0.36	
SUSFBN35B21D16	21	16	5×2.3	6	69	63.91	53	20	6	0.36	
SUSFBN35B21D18	21	18	6×2.8	6	69	63.91	53	20	6	0.36	
SUSFBN35B21D20	21	20	6×2.8	6	69	63.91	53	20	6	0.36	
SUSFBN35B21D30	21	30	8×3.3	8	69	63.91	53	20	6	0.36	
SUSFBN35B22D12	22	12	4×1.8	5	72	66.93	56	20	6	0.37	
SUSFBN35B22D15	22	15	5×2.3	6	72	66.93	56	20	6	0.37	
SUSFBN35B22D16	22	16	5×2.3	6	72	66.93	56	20	6	0.37	
SUSFBN35B22D18	22	18	6×2.8	6	72	66.93	56	20	6	0.37	
SUSFBN35B22D20	22	20	6×2.8	6	72	66.93	56	20	6	0.37	
SUSFBN35B23D12	23	12	4×1.8	5	75	69.95	60	20	6	0.38	
SUSFBN35B23D15	23	15	5×2.3	6	75	69.95	60	20	6	0.38	

\*M is a set screw. \* The seal set screws differ from the usual due to the boss type.

① Sprockets with a ★ symbol for BD have a channel in the boss exterior.

No. of Teeth	S	GD
9	4.4	17
10		20
11	4.4	23
12		26
13	4.4	29

☆Special Shaft Hole Machined Specification

$\phi$ D <sup>H7</sup>	Keyway b×t <sup>2</sup>	Set screw M
10	4×1.8	4

\* m Parts only can be selected for special shaft hole machining.

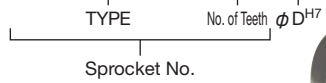


\* If you order a special shaft diameter specification, please append K4 after the hole diameter.  
Example: SUSFBN35B12D10K4  
\* Products with long screw holes also include products subject to counter boring

# SUSFBN35B

## Order Product Code

**SUSFBN35B 17 D12**

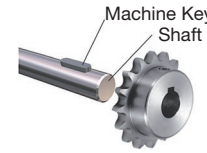


- Chain ..... **No.35**
- Chain Pitch ..... **(P) 9.525 mm**
- Bushing Link Inner Width ..... **(W) 4.78 mm**
- Bushing Outside Diameter ..... **(Dr) 5.08 mm**
- Tooth Width ..... **(T) 4.3 mm**

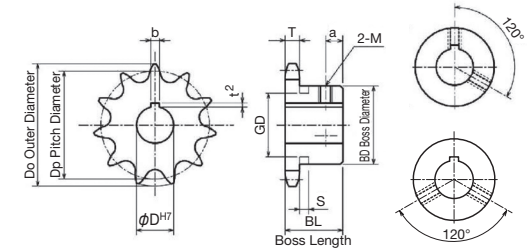
TYPE	SUSFBN35B									
	m Stainless Steel GB 304									
Product Code	No. of Teeth	φ D <sup>H7</sup>	Keyway b×t <sup>2</sup>	M	Do	Dp	BD	BL	a	Weight kg
SUSFBN35B23D16	23	16	5×2.3	6	75	69.95	60	20	6	0.38
SUSFBN35B23D18	23	18	6×2.8	6	75	69.95	60	20	6	0.38
SUSFBN35B23D20	23	20	6×2.8	6	75	69.95	60	20	6	0.38
SUSFBN35B24D12	24	12	4×1.8	5	78	72.97	53	22	8	0.43
SUSFBN35B24D15	24	15	5×2.3	6	78	72.97	53	22	8	0.43
SUSFBN35B24D16	24	16	5×2.3	6	78	72.97	53	22	8	0.43
SUSFBN35B24D18	24	18	6×2.8	6	78	72.97	53	22	8	0.43
SUSFBN35B24D20	24	20	6×2.8	6	78	72.97	53	22	8	0.43
SUSFBN35B24D22	24	22	6×2.8	6	78	72.97	53	22	8	0.43
SUSFBN35B24D25	24	25	8×3.3	8	78	72.97	53	22	8	0.43
SUSFBN35B30D15	30	15	5×2.3	6	96	91.12	53	22	8	0.51
SUSFBN35B30D16	30	16	5×2.3	6	96	91.12	53	22	8	0.51
SUSFBN35B30D18	30	18	6×2.8	6	96	91.12	53	22	8	0.51
SUSFBN35B30D20	30	20	6×2.8	6	96	91.12	53	22	8	0.51

\*M is a set screw. \* The seal set screws differ from the usual due to the boss type.

# SUS FBN Finished Bore Sprocket D10 K4×1.8 Specification SUS FBN Finished Bore Sprocket New JIS Keyway Specification



Use together with the KANA machine key. Refer to P.334 to P.335



! φ D<sup>H7</sup> mark setscrew is set at a location other than the keyway (above figure).

TYPE	SUSFBN35B									
	m Stainless Steel GB 304									
Product Code	No. of Teeth	φ D <sup>H7</sup>	Keyway b×t <sup>2</sup>	M	Do	Dp	BD	BL	a	Weight kg
SUSFBN35B30D22	30	22	6×2.8	6	96	91.12	53	22	8	0.51
SUSFBN35B30D25	30	25	8×3.3	8	96	91.12	53	22	8	0.51
SUSFBN35B32D15	32	15	5×2.3	6	102	97.18	53	22	8	0.54
SUSFBN35B32D16	32	16	5×2.3	6	102	97.18	53	22	8	0.54
SUSFBN35B32D18	32	18	6×2.8	6	102	97.18	53	22	8	0.54
SUSFBN35B32D20	32	20	6×2.8	6	102	97.18	53	22	8	0.54
SUSFBN35B32D22	32	22	6×2.8	6	102	97.18	53	22	8	0.54
SUSFBN35B32D25	32	25	8×3.3	8	102	97.18	53	22	8	0.54
SUSFBN35B40D18	40	18	6×2.8	6	127	121.40	63	25	10	0.85
SUSFBN35B40D20	40	20	6×2.8	6	127	121.40	63	25	10	0.85
SUSFBN35B40D22	40	22	6×2.8	6	127	121.40	63	25	10	0.85
SUSFBN35B40D25	40	25	8×3.3	8	127	121.40	63	25	10	0.85
SUSFBN35B40D30	40	30	8×3.3	8	127	121.40	63	25	10	0.85

\*M is a set screw. \* The seal set screws differ from the usual due to the boss type.



\* Products with long screw holes also include products subject to counter boring

Caution