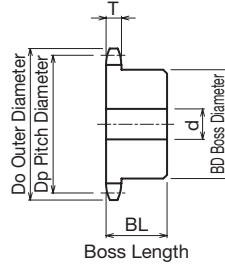
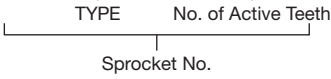


SUS2060B

SUS Standard Stainless Steel Double Pitch Sprocket for S Rollers B-type

Order Product Code

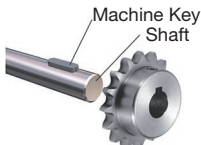
SUS2060B 9 1/2



- Chain **No.C2060H**
- Chain Pitch **(P) 38.10 mm**
- Roller Link Inner Width **(W) 12.70 mm**
- Roller Outside Diameter **(Dr) 11.91 mm**
- Tooth Width **(T) 11.7 mm**

m Stainless Steel **GB** 304

TYPE	No. of Active Teeth	Actual No. of Teeth	Do	Dp	Shaft Hole Diameter d			BD	BL	Shape	Weight kg
					Prepared Hole	Minimum	Maximum				
SUS2060B	9 1/2	19	126	117.339	16	17	55	83	40	Ground Specification	2.1
	10 1/2	21	138	129.260	16	17	55	83	40		2.3
	11 1/2	23	150	141.217	16	17	55	80	45		2.7
	12 1/2	25	162	153.203	18	19	55	80	45		3.0



Use together with the KANA machine key.
Refer to P.334 to P.335