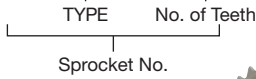


# NK11SSB

## Micropitch Sprocket B-type

### Order Product Code

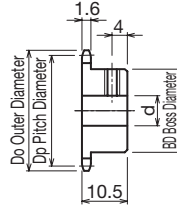
## NK11SSB 16



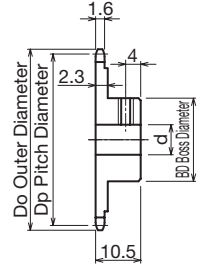
B-I Type



B-II Type



B-I Type



B-II Type

- Chain .....No.11
- Chain Pitch .....(P) 3.7465mm
- Bushing Link Inner Width .....(W) 1.83 mm
- Bushing Outside Diameter .....(Dr) 2.285 mm
- Tooth Width .....(T) 1.6 mm

**m** Stainless Steel

TYPE	No. of Teeth	Type	Do	Dp	Shaft Hole Diameter d		BD	BL	Set Screw Hole	Shape	Weight g
					Minimum	Maximum					
NK11SSB	12	B-I-type	16.2	14.475	4	6	9.4	10.5	M3	Ground Specification	5.9
	15		19.9	18.020	4	9	13	10.5			11.5
	16		21.1	19.204	4	9	14	10.5			13.5
	18		23.5	21.575	4	11	16	10.5			17.7
	20		25.9	23.949	6	13	19	10.5			23.3
	24	30.7	28.703	6	13	19	10.5	M4	25.7		
	28	35.5	33.462	6	13	19	10.5	M4	28.7		
	30	B-II-type	37.9	35.842	6	13	19	10.5	M4	Ground Specification	29.7
	34		42.7	40.604	6	13	19	10.5			37.9
	36		45.1	42.986	6	13	19	10.5			40.7
40	49.8		47.751	6	13	19	10.5	46.5			
48	59.4		57.283	6	13	19	10.5	60.5			