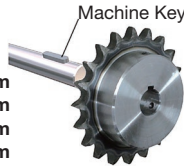
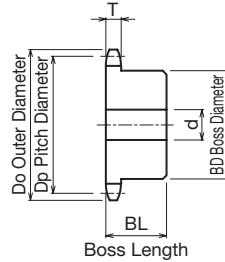
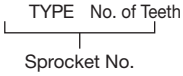


# K50B

## K Sprocket Former B-type

### Order Product Code

**K50B 15**



- Chain .....No.50
- Chain Pitch .....(P) 15.875mm
- Roller Link Inner Width ...(W) 9.53 mm
- Roller Outside Diameter ...(Dr) 10.16 mm
- Tooth Width .....(T) 8.7 mm

Use together with the KANA machine key. Refer to P.334 to P.335

- m Carbon Structural Steel
- h High-frequency Hardened Teeth

TYPE	No. of Teeth	Do	Dp	Shaft Hole Diameter d			BD	BL	Shape	Weight kg
				Prepared Hole	Minimum	Maximum				
<b>K50B</b>	10	58	51.373	10	11	20	35	25	Ground Specification	0.25
	11	64	56.348	12	13	20	37	25		0.30
	12	69	61.336	12	13	25	43	25		0.40
	13	74	66.335	12	13	28	48	30		0.50
	14	79	71.342	12	13	32	53	30		0.60
	15	84	76.355	12	13	35	58	30		0.70
	16	89	81.373	14	15	42	63	30		0.80
	17	94	86.395	14	15	45	65	40		0.95
	18	100	91.420	14	15	45	65	40		1.20
	19	105	96.449	14	15	45	65	40		1.30
	20	110	101.480	14	15	46	70	45		1.60
	21	115	106.513	14	15	46	70	45		1.75
	22	120	111.548	16	17	46	70	45		1.80
	23	125	116.585	16	17	46	70	45		1.85
	24	130	121.623	16	17	46	70	45		1.90
	25	135	126.662	16	17	46	70	45		2.00
	26	140	131.703	16	17	46	70	45		2.10
	27	145	136.744	16	17	46	70	45		2.20
	28	150	141.786	16	17	46	70	45		2.35
	29	155	146.829	16	17	46	70	45		2.50
30	161	151.873	16	17	46	70	45	2.60		
31	166	156.917	16	17	46	70	45	2.70		
32	171	161.961	16	17	46	70	45	2.90		
33	176	167.007	16	17	46	70	45	2.95		
34	181	172.052	16	17	46	70	45	3.00		
35	186	177.099	16	17	46	70	45	3.10		