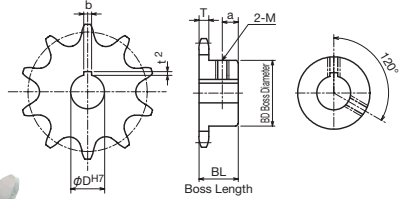
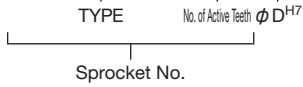


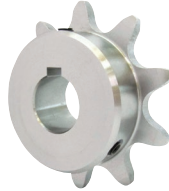
FBN2082B

FBN Double Pitch Sprocket for R Rollers New JIS Keyway Specification

Order Product Code FBN2082B11D30



- Chain No. **C2082H**
- Chain Pitch (P) **50.80 mm**
- Roller Link Inner Width (W) **15.88 mm**
- Roller Outside Diameter (Dr) **28.58 mm**
- Tooth Width (T) **14.6 mm**



TYPE **FBN2082B** m Carbon Structural Steel

Product Code	No. of Active Teeth	φ D ^{H7}	Keyway b×t ²	M	Do	Dp	BD	BL	a	Weight kg
FBN2082B11D30	11	30	8×3.3	8	204.0	180.313	107	45	12	4.42
FBN2082B11D35	11	35	10×3.3	8	204.0	180.313	107	45	12	4.42
FBN2082B11D40	11	40	12×3.3	8	204.0	180.313	107	45	12	4.42
FBN2082B11D45	11	45	14×3.8	10	204.0	180.313	107	45	12	4.42
FBN2082B12D30	12	30	8×3.3	8	220.0	196.276	107	45	12	4.49
FBN2082B12D35	12	35	10×3.3	8	220.0	196.276	107	45	12	4.49
FBN2082B12D40	12	40	12×3.3	8	220.0	196.276	107	45	12	4.49
FBN2082B12D45	12	45	14×3.8	10	220.0	196.276	107	45	12	4.49

*M is a set screw. * The seal set screws differ from the usual due to the boss type.