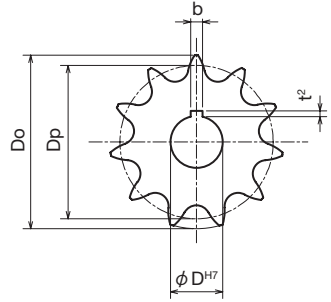
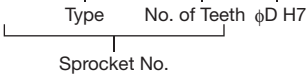


# FBK60B

## ● Order No. Example

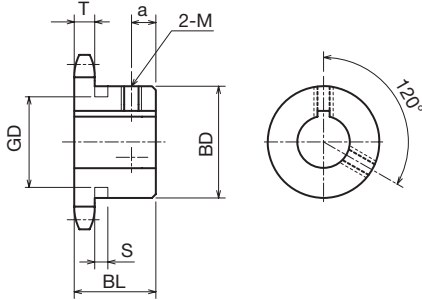
**FBK 60B 20 D25**



- Chain .....No.60
- Chain Pitch .....(P)19.05mm
- Roller Link Inner Width .....(W)12.70mm
- Roller Outside Diameter .....(Dr)11.91mm
- Tooth Width .....(T)11.7 mm

Type	No. of Teeth	Outer Diameter Do	Pitch Diameter Dp	Boss Diameter BD	Boss Length BL	a	Weight kg	φD <sup>H7</sup>	¥
<b>FBK 60B</b>	10	68	61.65	★49	32	6	0.49	25	
	11	76	67.62	★51	32	6	0.60	25 28 30	
	12	83	73.60	51	32	8	0.69	24 25 28 30	
	13	89	79.60	57	32	8	0.81	25 28 30	
	14	95	85.61	62	32	8	0.96	20 25 28 30	
	15	101	91.62	68	32	8	1.10	18 24 25 28 30	
	16	107	97.65	73	32	8	1.30	24 25 28 30	
	17	113	103.67	73	32	8	1.40	25 28 30	
	18	119	109.71	83	40	12	2.00	25 28 30	
	19	126	115.74	83	40	12	2.10	25 28 30 32 35 38	
	20	132	121.78	83	40	12	2.20	25 28 30 32 35 38 40	
	21	138	127.82	83	40	12	2.30	25 28 30	
	22	144	133.86	83	40	12	2.50	28 30 35 40	
	23	150	139.90	83	40	12	2.50	28 30	
	24	156	145.95	83	40	12	2.60	25 30 35 38 40	
	25	162	151.99	83	40	12	2.70	28 30 35 40	
	26	168	158.04	83	40	12	2.90	30 35	
	27	174	164.09	83	40	12	3.00	30 35 40	
	28	180	170.14	83	40	12	3.10	30 35 40	
	30	193	182.25	83	40	12	3.40	35 40	

# FBK Finished Bore Sprocket Old JIS Keyway Specification



Sprocket No.  $\phi D^{H7}$  and Quantity



Same-day shipping



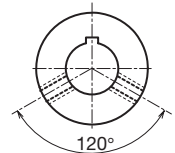
\* Since we also manufacture sizes other than those in the catalog, and machine shaft holes/keys/taps, etc., depending on your request, please contact our company's sales office for details.

- m Carbon Structural Steel
- h High-frequency Hardened Teeth

$\phi D^{H7}$	¥	$\phi D^{H7}$	¥	No. of Teeth
				10
				11
32 35				12
32 35 38 40				13
32 35 38		40		14
32 35 38 40		45		15
32 35 38 40		45 48 50		16
32 35 38 40		45 50		17
32 35 38		40 45 50		18
40 45 50				19
45 50 <span style="border: 1px solid black; padding: 1px;">55</span>				20
32 35 38		40 45 50		21
45 50		<span style="border: 1px solid black; padding: 1px;">55</span>		22
35 40		45 <span style="border: 1px solid black; padding: 1px;">55</span>		23
45 50 <span style="border: 1px solid black; padding: 1px;">55</span>				24
45 50				25
40		45 50 <span style="border: 1px solid black; padding: 1px;">55</span>		26
45				27
45 50				28
45 50				30

## Shaft Hole Machined Specification

$\phi D^{H7}$	Keyway bxt <sup>2</sup>	Set Screw M
18 - 20	5 x 2.0	6
22 - 30	7 x 3.0	8
32 - 40	10 x 3.5	8
42 - 50	12 x 3.5	10
55	15 x 5.0	12



!  $\phi D^{H7}$  set screws with a  $\square$  symbol are set in places other than the keyway (above diagram).

! The sprocket set screws in the table below are different from those above due to the boss type.

No. of Teeth	$\phi D^{H7}$	Set Screw M
12	35	6
13	40	6

! Sprockets with a  $\star$  symbol for BD have a channel in the boss exterior.

No. of Teeth	S	GD
9		32
10	8.0	37
11		45