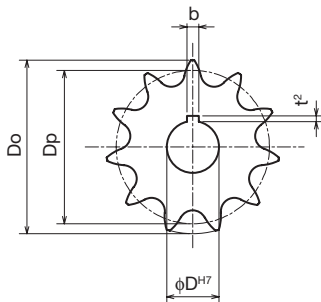
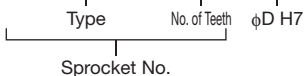


FBK50B

● Order No. Example

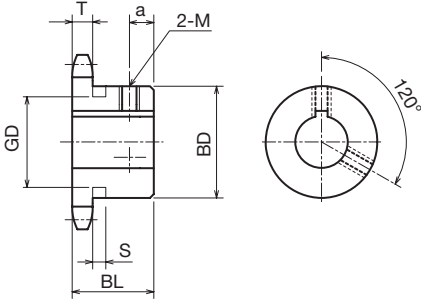
FBK 50B 20 D22



- Chain No.50
- Chain Pitch (P)15.875mm
- Roller Link Inner Width (W) 9.53 mm
- Roller Outside Diameter (Dr)10.16 mm
- Tooth Width (T) 8.7 mm

Type	No. of Teeth	Outer Diameter Do	Pitch Diameter Dp	Boss Diameter BD	Boss Length BL	a	Weight kg	φD ^{H7}	¥
FBK 50B	9	53	46.41	★34	25	5	0.20	17	
	10	58	51.37	★40	25	5	0.27	15 20	
	11	64	56.35	★45.5	25	5	0.33	17 20	
	12	69	61.34	★50	25	5	0.41	17 18 19 20	
	13	74	66.34	★51	25	5	0.46	18 20	
	14	79	71.34	52	25	7	0.52	18 20	
	15	84	76.35	57	25	7	0.62	15 20	
	16	89	81.37	62	25	7	0.72	19 20 22 24 25 28 30 32 35	
	17	94	86.39	67	25	7	0.83	18 20	
	18	100	91.42	72	28	8	1.00	20	
	19	105	96.45	73	28	8	1.10	24 25 28 30	
	20	110	101.48	73	28	8	1.20	18 20 22	
	21	115	106.51	73	28	8	1.20	24 25 28 30	
	22	120	111.55	73	28	8	1.30	22 25 28 30	
	23	125	116.58	73	28	8	1.30	24 25 28 30	
	24	130	121.62	73	28	8	1.40	22 25 28 30	
	25	135	126.66	73	28	8	1.50	24 25 28 30	
	26	140	131.70	73	28	8	1.50	25 28 30	
	27	145	136.74	73	28	8	1.50	30	
	28	150	141.79	73	28	8	1.60	25 28 30	
	29	155	146.83	73	28	8	1.70	30	
	30	161	151.87	73	28	8	1.80	28 30	
	32	171	161.96	73	28	8	1.90	25 30	
	33	176	167.01	73	28	8	2.00	35	
	34	181	172.05	73	28	8	2.10	30	
	35	186	177.10	73	28	8	2.20	25 30	

FBK Finished Bore Sprocket Old JIS Keyway Specification



Sprocket No. ϕD^{H7} and Quantity



Postage

Same-day shipping



Guide

* Since we also manufacture sizes other than those in the catalog, and machine shaft holes/keys/taps, etc., depending on your request, please contact our company's sales office for details.

- m Carbon Structural Steel
- h High-frequency Hardened Teeth

ϕD^{H7}	¥	ϕD^{H7}	¥	No. of Teeth
				9
25				10
22 25				11
22 24 25 28 30				12
22 24 25 28 30 32				13
22 24 25 28 30 32 35				14
22 24 25 28 30 32 35 38				15
38 40				16
22 24 25 28 30 32		35 38 40		17
22 24 25 28 30		32 35 40		18
32 35 38 40				19
24 25 28 30 32 35 38 40		45 50		20
32 35 38 40				21
35 40		45		22
32 35		40		23
35 38 40				24
32 35 38 40		45		25
35 40				26
40				27
35 40		42		28
				29
35 40		45		30
35 40				32
				33
				34
35		40		35

Shaft Hole Machined Specification

ϕD^{H7}	Keyway bxt ²	Set Screw M
14 - 20	5x2.0	6
22 - 30	7x3.0	8
32 - 40	10x3.5	8
42 - 50	12x3.5	10

! The sprocket set screws in the table below are different from those above due to the boss type.

No. of Teeth	ϕD^{H7}	Set Screw M
10	22 24 25	6
11	22 24 25	6
12	22 24 25 28 30 32	6
13	22 24 25 28 30 32	6
14	35	6

! Sprockets with a ★ symbol for BD have a channel in the boss exterior.

No. of Teeth	S	GD
9		29
10	6.4	34
11		39
12	6.4	44
13	6.4	49

