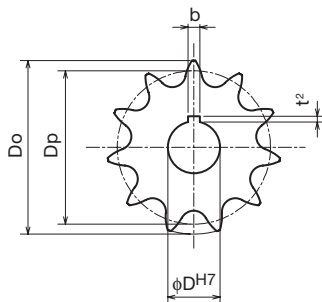


FBK40B

Order No. Example

FBK 40B 18 D20

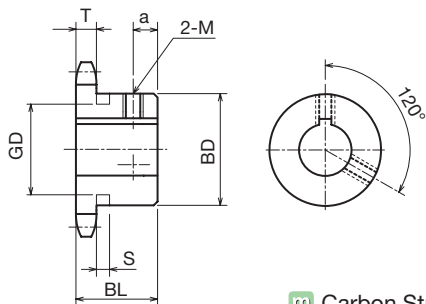
Type No. of Teeth ϕ D H7
Sprocket No.



- Chain No.40
- Chain Pitch (P) 12.70mm
- Roller Link Inner Width (W) 7.95mm
- Roller Outside Diameter (Dr) 7.92mm
- Tooth Width (T) 7.2 mm

Type	No. of Teeth	Outer Diameter Do	Pitch Diameter Dp	Boss Diameter BD	Boss Length BL	a	Weight kg	ϕ D ^{H7}	¥
FBK 40B	9	42	37.13	★28	22	5	0.11	12	
	10	46	41.10	★32	22	5	0.14	12	
	11	51	45.08	★36	22	5	0.19	12 15 17	
	12	55	49.07	★40	22	5	0.22	12	
	13	59	53.07	37	22	6	0.23	15 17 18 19 20	
	14	63	57.07	42	22	6	0.28	14 15 17 18 19 20	
	15	67	61.08	46	22	6	0.34	14 15 17 18 19 20	
	16	71	65.10	50	22	6	0.40	15 17 18 19 20	
	17	76	69.12	54	22	6	0.46	18 19 20	
	18	80	73.14	57	22	6	0.51	15 18 19 20	
	19	84	77.16	62	22	6	0.59	15 18 20	
	20	88	81.18	67	25	7	0.76	15 17 18 19 20	
	21	92	85.21	71	25	7	0.85	18 19 20 22 25 28 30	
	22	96	89.24	75	25	7	0.95	20 22 24 25	
	23	100	93.27	77	25	7	1.00	20 25	
	24	104	97.30	83	25	7	0.84	20 22 24 25	
	25	108	101.33	87	25	7	0.88	18 20 22 25	
	26	112	105.36	91	25	7	0.92	18 20 24 25 28 30	
	27	116	109.40	95	25	7	0.96	20 22 25 30	
	28	120	113.43	99	25	7	1.00	22 24 25 30	
	29	124	117.46	103	25	7	1.00	25	
	30	128	121.50	107	25	7	1.10	20 22 24 25 28 30	
	32	137	129.57	115	28	10	1.30	25 30	
	35	149	141.68	127	28	10	1.40	25 30	
	36	153	145.72	131	28	10	1.50	20 25 30	
	37	157	149.75	135	28	10	1.55	35	
	38	161	153.79	139	28	10	1.60	24 28	
	40	169	161.87	147	28	10	1.70	30	

FBK Finished Bore Sprocket Old JIS Key Groove Specification



Sprocket No. ϕD^{H7} and Quantity



Same-day shipping



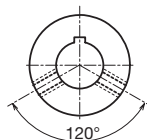
* Since we also manufacture sizes other than those in the catalog, and machine shaft holes/keys/taps, etc., depending on your request, please contact our company's sales office for details.

- m Carbon Structural Steel
- h High-frequency Hardened Teeth

ϕD^{H7}	¥	ϕD^{H7}	¥	No. of Teeth
15				9
15		16		10
20				11
15 17 18 19 20		22		12
22 24 25				13
22 24 25 28				14
22 24 25 28 30				15
22 24 25 28 30				16
22 24 25 28 30		32		17
22 24 25 28 30		32 35		18
22 24 25 30				19
22 24 25 28 30		35 40		20
35 40				21
28 30 35				22
28 30 35				23
28 30 35				24
30 35				25
35				26
35				27
35 40				28
32 35 40				29
35				30
35 40				32
35				35
35				36
				37
				38
35 40				40

Shaft Hole Machined Specification

ϕD^{H7}	Keyway b×t ²	Set Screw M
10 - 12	4 x 1.5	5
14 - 20	5 x 2.0	6
22 - 30	7 x 3.0	8
32 - 40	10 x 3.5	8
42 - 45	12 x 3.5	10



⚠ ϕD^{H7} set screws with a □ symbol are set in places other than the keyway (above diagram).

⚠ The sprocket set screws in the table below are different from those above due to the boss type.

No. of Teeth	ϕD^{H7}	Set Screw M
12	22	6
13	22	6
15	30	6

⚠ Sprockets with a ★ symbol for BD have a channel in the boss exterior.

No. of Teeth	S	GD
9		23
10	5.2	27
11	5.2	31
12		35