

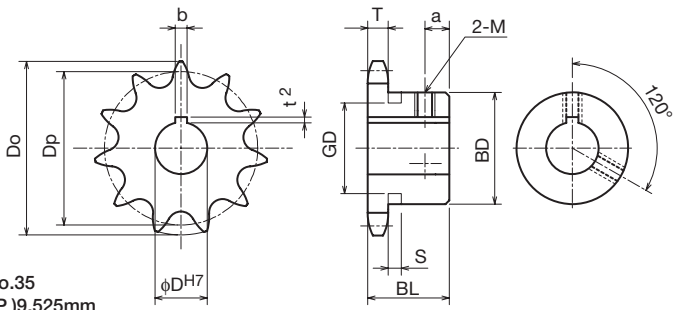
FBK35B

● Order No. Example

FBK35B 20 D20



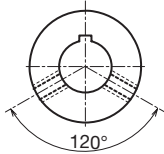
Sprocket No.



- Chain No.35
- Chain Pitch (P)9.525mm
- Bushing Link Inner Width ... (W)4.78 mm
- Bushing Outside Diameter ... (Dr)5.08 mm
- Tooth Width (T)4.3 mm

Type	No. of Teeth	Outer Diameter Do	Pitch Diameter Dp	Boss Diameter BD	Boss Length BL	a	Weight kg
FBK35B	10	34	30.82	★24.5	20	6	0.08
	11	38	33.81	★27	20	6	0.09
	12	41	36.80	★30.5	20	6	0.12
	13	44	39.80	★32	20	6	0.12
	14	47	42.81	32	20	6	0.12
	15	51	45.81	35	20	6	0.16
	16	54	48.82	37	20	6	0.19
	17	57	51.84	41	20	6	0.22
	18	60	54.85	44	20	6	0.25
	19	63	57.87	47	20	6	0.28
	20	66	60.89	50	20	6	0.32
	21	69	63.91	53	20	6	0.36
	22	72	66.93	56	20	6	0.37
	23	75	69.95	60	20	6	0.38
	24	78	72.97	53	22	8	0.43
	25	81	76.00	53	22	8	0.44
	26	84	79.02	53	22	8	0.45
	30	96	91.12	53	22	8	0.51
	32	102	97.18	53	22	8	0.54
	35	112	106.26	53	22	8	0.59
36	115	109.29	53	22	8	0.61	
40	127	121.40	63	25	10	0.85	

FBK Finished Bore Sprocket Old JIS Keyway Specification



! ϕD^{H7} set screws with a \square symbol are set in places other than the keyway (above diagram).

m Carbon Structural Steel

h High-frequency Hardened Teeth

ϕD^{H7}	¥	ϕD^{H7}	¥	No. of Teeth
10		12		10
10		14		11
10 12 14 15		17		12
10 12		15 17		13
12 14		15 17 <u>20</u>		14
12 14		15 16 17 18 19 20		15
12 14 15 17 18 20		22 <u>25</u>		16
12 15 17 20		22 25		17
12 14 15 20		25		18
15 20		25		19
12 15 16 17 18 20 22		25 28 30		20
12 14 15 20		25		21
15 20 22		25		22
15 20				23
12 15 17 20		25 30		24
17		20		25
20		22 25		26
20		25		30
17				32
20		25		35
20				36
20 25				40



Sprocket No. ϕD^{H7} and Quantity



Same-day shipping



* Since we also manufacture sizes other than those in the catalog, and machine shaft holes/keys/taps, etc., depending on your request, please contact our company's sales office for details.

Shaft Hole Machined Specification

ϕD^{H7}	Keyway $b \times t^2$	Set Screw M
10 - 12	4 x 1.5	5
14 - 20	5 x 2.0	6
22 - 30	7 x 3.0	8

! The sprocket set screws in the table below are different from those above due to the boss type.

No. of Teeth	ϕD^{H7}	Set Screw M
16	22	6
17	25	6

! Sprockets with a \star symbol for BD have a channel in the boss exterior.

No. of Teeth	S	GD
9		17
10	4.4	20
11	4.4	23
12	4.4	26
13	4.4	29