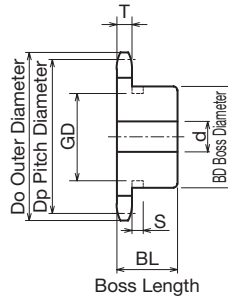
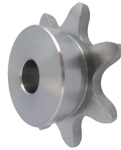
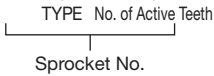


2052B

Standard Double Pitch Sprocket for R Rollers B-type

Order Product Code

2052B 20



- Chain **No.C2052**
- Chain Pitch **(P) 31.75 mm**
- Roller Link Inner Width **(W) 9.53 mm**
- Roller Outside Diameter **(Dr) 19.05 mm**
- Tooth Width **(T) 8.7 mm**

TYPE	No. of Active Teeth	Do	Dp	Shaft Hole Diameter d			BD	BL	Shape	Tooth Section	Weight kg
				Prepared Hole	Minimum	Maximum					
2052B	7	85	73.176	20	21	30	★50	28	Ground Specification	Carbon Structural Steel	0.46
	8	96	82.967	20	21	40	★60	28			0.67
	9	106	92.831	20	21	42	66	28			0.86
	10	116	102.745	20	21	48	73	28			1.10
	11	127	112.696	20	21	48	73	28			1.20
	12	138	122.673	20	21	48	73	28			1.30
	13	148	132.670	20	21	48	73	28			1.50
	14	158	142.683	20	21	48	73	28			1.90
	15	168	152.709	20	21	48	73	28			2.00
	16	179	162.745	20	21	48	73	28			2.30
	17	189	172.790	20	21	55	83	35			2.45
	18	199	182.841	20	21	55	83	35			2.75
	19	209	192.898	20	21	55	83	35			2.95
	20	220	202.960	20	21	55	83	35			3.15
	21	229	213.027	20	21	55	83	35			3.25
	22	240	223.097	26	27	55	83	35			3.48
	23	250	233.170	26	27	55	83	35			3.71
	24	260	243.246	26	27	55	83	35			3.96
	25	270	253.325	26	27	55	83	35			4.22
	26	281	263.405	26	27	55	83	35			4.49
	28	301	283.572	26	27	55	83	35			5.06
	30	321	303.745	26	27	55	83	35			5.68

! Sprockets with a ★ symbol for BD have a channel in the boss exterior.

No. of Teeth	S	GD
7	7	45
8		56